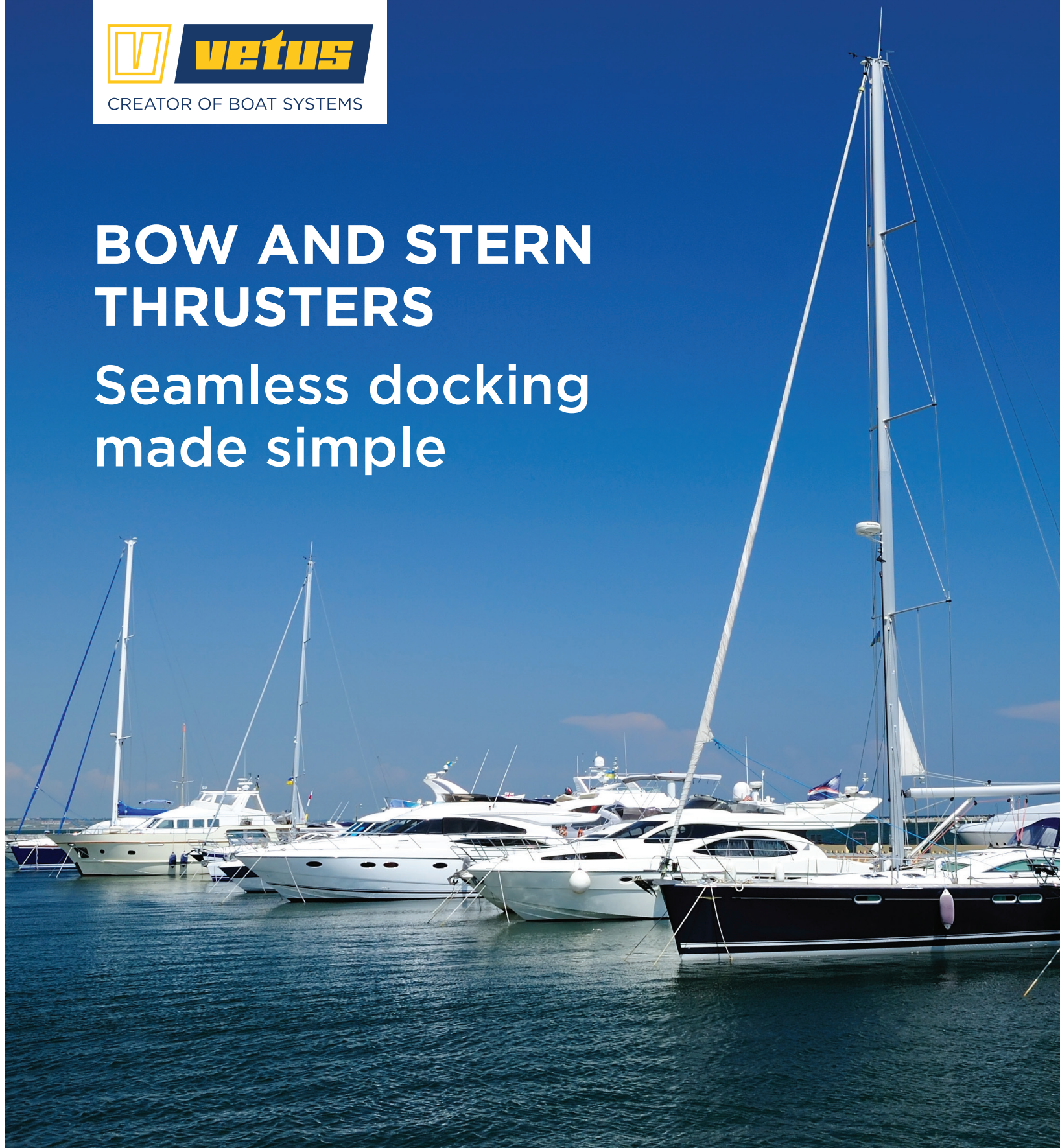




CREATOR OF BOAT SYSTEMS


BOW AND STERN THRUSTERS

Seamless docking made simple



VETUS DC thruster solutions
ORIGINAL ON/OFF





Take the stress out of docking, even in close quarters, cross winds, and crosscurrents: With a VETUS thruster on board, you will have the confidence of complete sideways control over your boat while manoeuvring. With the widest range of thrusters on the market, you are assured to find a model to fit your boat seamlessly.

PROVEN CONCEPT, OPTIMUM FLOW

VETUS DC thrusters have become the world standard in wound carbon brushed technology. The optimum combination of safety features with proven mechanical design innovations will enable you to experience a powerful yet reliable boat operation even in the most challenging docking situations.

THE ADVANTAGES OF A VETUS DC THRUSTER

Minimal noise because of its unique six blade propeller design, spiral gears and flexible coupling

Optimum flow due to the streamlined tailpiece

Eliminated corrosion and reduced weight with the synthetic propeller

Integrated thermal switch to prevent overheating

High performance, efficient and reliable series wound carbon brushed electric DC motor

Simple and intuitive to operate



Established reputation: Experience that matters

The original VETUS DC bow and stern thrusters have been developed and perfected over 40 years of research and development. Installed on boats worldwide and operating in every possible condition, time has become the proven track record of a thruster that exceeds expectations.

TIME-TESTED PERFORMANCE AND RELIABILITY

The VETUS DC Thruster series comes in a range of nineteen thrusters, ideal for boats from 4,5 to 27,5 meters (15 to 90 feet). With technical features far surpassing its affordability, these thrusters will impress you from installation to operation.

DC THRUSTERS

- On / off, port-starboard controls
- Lowest costs, simplest installation, easy retrofit
- Thrust outputs ranging from 25 kgf to 285 kgf
- Battery powered at 12, 24 and 48 VDC
- Run time of 2-4 minutes continuous or combined in one hour
- Motor technology: direct current, series wound with carbon brushes

Boat length (m)		6	8	10	12	14	16	18	20	22	24	26	28
Boat length (feet)		20	26	32	39	46	52	59	65	72	79	85	92
Tunnel diameters	300 mm 11,8"												
	250 mm 9,8"												
	185 mm 7,3"												
	150 mm 5,9"												
	140 mm 5,5"												
	125 mm 4,92"												
	110 mm 4,33"												

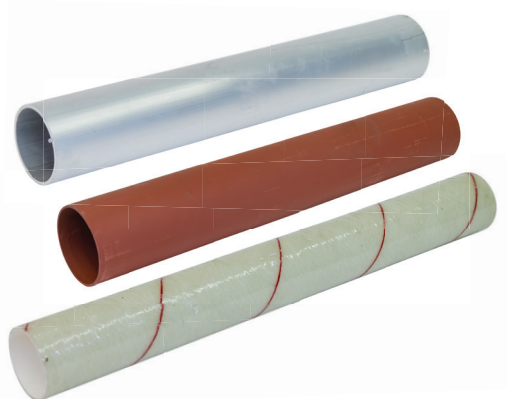
(THRUST IN KGF)

DC BOW AND STERN THRUSTERS

CONTROL PANELS

Different IP64 waterproof bow thruster panels are available in both premium and compact versions.

Type	Description	Voltage (DC)	Cut-out size (mm)
BPJR	Thruster panel with joystick and time delay	12 / 24	Ø 52
BPAS	Thruster touch panel with time delay	12 / 24	Ø 52
BPAJ	Joystick with time delay	12 / 24	Ø 52



TUNNELS - Ultimate strength

Wide range of options: GRP, steel, or aluminum.

Our tunnels are available in several materials, lengths, and diameters, besides being purpose built for all VETUS Thrusters.

A range of tunnels with measurements ranging from 110 to 400 mm in diameter, and 750 to 3000 mm in length. It's freedom to choose what suits your boat best.



Global Network

With the widest dealer and technical assistance network, we got you covered wherever you happen to be sailing.



Service and Warranty

Industry-leading service and support with 3 year warranty on all thruster equipment.

Discover our complete line-up of thrusters and accessories



WWW.VETUS.COM



CHECK OUR SOCIALS

