

NEXT LEVEL LARGER DIAMETER PROPS

FOR BIG HP ENGINES
**UPGRADE
TODAY**

COST EFFECTIVE PERFORMING REPLACEMENT FOR
Mercury® Evertia Eco®, Suzuki®, Yamaha® Salt Water Series II® & XL®
along with other 90-400+hp OEM & Aftermarket propellers



For Evinrude® Honda® Johnson® Mariner® Mercury® MerCruiser® Nissan® OMC® Suzuki® Tohatsu® Volvo Penta® Yamaha® Engines



- **Advanced Design Enhancements:** The Express Mach3 OS Series features improvements to the propeller's cup, edges, rake, and blade geometry, enhancing hole shot, bow lift, and cornering capabilities.
- **Versatile Compatibility:** Suitable for large horsepower applications, the propeller fits most 90hp and larger 4.75-5.44" gearcase outboards from many engine manufacturers, as well as Mercury Alpha and Bravo One, and Volvo Penta SX sterndrives.
- **Fuel Efficiency:** Specifically designed for optimal mid-range fuel economy, making it ideal for maximizing time on the water and extending cruise ranges.
- **High-Quality Materials:** Manufactured using proprietary TP17™ stainless steel for superior corrosion resistance and strength over conventional materials.
- **Variety in Sizes and Configurations:** Available in multiple sizes (15.6" diameter ranging from 11" to 27" pitch) and both left and right rotation models, accommodating diverse boating needs and multi-engine installations.



See next page for engine fitment information



©2024 Turning Point Propellers Inc. All Rights Reserved (original copy author & content creator). This publication may not be reproduced or copied without the written permission of Turning Point Propellers Inc.


INSTALLATION KIT APPLICATION GUIDE

Turning Point Hub Kit Brands	Sub Brands	Specialized Solution	HP Gearcase	Engine Brands	Hub Kit Series	Aluminum Propellers	Stainless Steel Propellers (under 200hp)	Stainless Steel Propellers (200+hp)	Material Surface	Material Spindle	Spindle Length	Warranty
MasterGuard	Classic	General Use	6-300+hp 2.5" to 4.75"	Most	10, 20, 200 & 500	✓	✓		Nylon/ Glass Filled	Marine Bronze	Half	Lifetime
MasterGuard	Super Duty	200+hp with Stainless Steel Props	200-300+hp 4.75"	Most	700			✓	Nylon/ Glass Filled	Marine Bronze	Full	Lifetime
MasterTorq	SDH (Sound Dampening Hub)	Shift Dog Noise (for noisy lower units)	40CT-300+hp 4.25" to 4.75"	Yamaha® & Mercury®	800		✓	✓	Rubber	Marine Bronze	Full	1 year
MasterTorq	FSH (Fat Shaft Hub)	125" Prop Shafts (Solid Hub Kit)	150-400+hp 5.25" to 5.44"	Mercury®	621	✓	✓	✓	Stainless / Cushioned Inserts	Stainless Steel	Full	1 year
Compatible Turning Point Prop Housing Brands Note: 500, 621, 700, 800 Hub Kit Series are also Compatible & Interchangeable with Competitors' Hub & Prop Systems. Works with Mercury® Flo-Torq™, Michigan Wheel® XHS™, Solas® Rubex™ hubs & prop housings.						Hustler	Express: Mach3, Mach3 OS & Mach4					

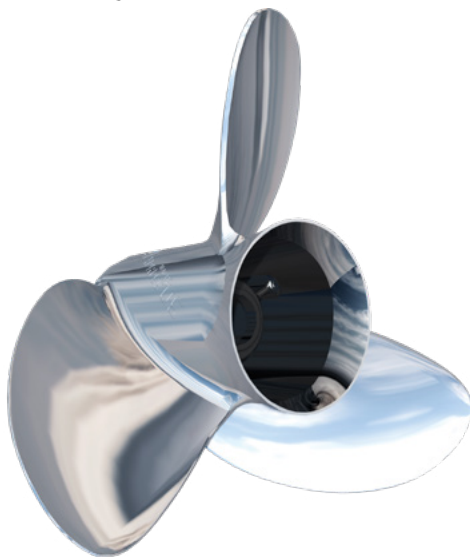
STEP 1: Find The Required Installation/Hub Kit

Engine Brand - Various Splined Prop Shafts	Kit	Part #
EVINRUDE® & JOHNSON®: (15 spline shaft) V4 with V6 large gearcase: 100hp commercial, 120hp ('85), 130hp ('95-'96), 140hp ('85), Pleasure ('95+): 115hp, 130hp / H.O. (includes E-TEC H.O.): (25" shaft) 90, 115, 135, 150, 200, 225, 250hp E-TEC (includes pontoon series - not for E-TEC G2): 90hp (25" shaft), 115hp, 130hp ('09-'10), 135hp to 300hp / V6: 135hp to 250hp / V8: 250hp to 300hp	502	11500200
EVINRUDE® E-TEC® G2™: (15 spline shaft) Note: Use 711 Super Duty Kit for 200+hp Engines w/ SS Props. G2 Series Only: 140hp w/ large gearcase, 150 H.O. to 300hp	511 711	11501100 11701100
HONDA®: (15 spline shaft) Note: Use 708 Super Duty Kit for 200+hp Engines w/ SS Props. BF115D ('11+), BF135 ('04+), BF150 ('04+), BF200 ('02+), BF225 ('02+), BF250 ('12+)	508 708	11500800 11700800
JOHNSON®: 4 stroke: 200- 225hp	707	11700700
MERCURY® & MARINER®: (15 spline shaft) Note: See Installation Kit Application Guide for best kit selection. ProXS 115CT / FourStroke™ & SeaPro™: 90CT, 115CT, 150hp, 200 to 300 V6: 135 to 300hp / Verado 135 to 300hp(not HD) / OptiMax: 150, 200, 250hp	501 701 801F	11500100 11700100 11800100
MERCURY®: (19 spline shaft) Designed for HD (Heavy Duty) 1.25" prop shaft - HD 5.25-5.44" gearcases: Pro XS 175-250hp w/ Torque Master gearcase, Verado 300-400hp, Sport Master, Torque Master I & II (Torque Master Gearcases to fit 200XS, 225X, 2.5 EFI, 225 Pro X, 250XS, 300X), Fleet Master	621	11602100
MERCURUISER®: (15 spline shaft) Alpha One and Bravo One ('83+) Note: Use 701 Super Duty Kit for 200+hp Bravo One Drives w/ SS Props. For all other applications use 501 kit w/ stainless steel or aluminum props. Note: If propeller strikes trim tab, replace with Mercury part #822777A1	501 701	11500100 11700100
MERCURUISER®: (19 spline shaft) Designed for HD (Heavy Duty) 1.25" prop shaft - HD 5.25-5.44" gearcases: Bravo One XR/XZ, Sport Master, shorty Sport Master Bravo One XR	621	11602100
OMC®: (15 spline shaft) Note: SX drives, see Volvo Penta SX listing below. Cobra 800: 3.0 to 7.5L / King Cobra: 454, 502, 7.4-8.2L ('90+) / Sea Drive: 2.0 to 4.0L	502	11500200
SUZUKI®: (15 spline shaft) Note: Use 707 Super Duty Kit for 200+hp Engines w/ SS Props. DT 2 stroke: 150hp to 225hp	507 707	11500700 11700700
SUZUKI®: (15 spline shaft) Note: Use 707 Super Duty Kit for 200+hp Engines w/ SS Props. (use Express Mach3 OS series props only) DF 4 stroke: 150 to 300hp	507 707	11500700 11700700
TOHATSU®: (15 spline shaft) Note: Use 708 Super Duty Kit for 200+hp Engines w/ SS Props. BFT115 ('14-'20), BFT150, BFT200, BFT225, BFT250	508 708	11500800 11700800
VOLVO® PENTA® SX & OMC® SX COBRA®: (19 spline) (94+): 3.0 to 8.2L. Not for Volvo DuoProp or Aquamatic drives.	504	11500400
VOLVO® PENTA® AQ: (17 spline)(4 blade props only) 200, 250, 270, 280, 290	510	11501000
YAMAHA®: (15 spline shaft) Note: See Installation Kit Application Guide for kit selection. Note: Use 805FT Kit with Express Mach3 OS Propellers Housings Note: If Express Mach3 OS Prop strikes trim tab, replace with TP part #41505060. 2 & 4 stroke: 150 to 250hp / F300 (V6 only '09+) / Sterndrives 3.0 to 7.4L	505 705 805F 805FT 715	11500500 11700500 11800500 11800510 11701500

STEP 2: Choose Propeller Housing

Prop Family	BLADES	Size	Brand	Right-Hand Prop Part#	Left-Hand Prop Part#
	3	15.6x11	Express OS	31511110	31511120
	3	15.6x13	Express OS	31511310	31511320
	3	15.6x15	Express OS	31511510	31511520
	3	15.6x17	Express OS	31511710	31511720
	3	15.6x19	Express OS	31511910	31511920
	3	15.6x21	Express OS	31512110	31512120
	3	15.6x23	Express OS	31512310	31512320
	3	15.6x25	Express OS	31512510	31512520
	3	15.6x27	Express OS	31512710	31512720

EXPRESS³ OS
STAINLESS STEEL PROPELLERS



©2024 Turning Point Propellers, Inc. All Rights Reserved. Evinrude, Johnson, and Cobra are registered trademarks of BRP US, Inc. Honda is a registered trademark of American Honda Motor Co., Inc. Mercury, Mariner, Force, MerCruiser, Alpha One™ and Bravo One™ are registered trademarks of Brunswick Corporation. Parsun is a registered trademark of Suzhou Parsun Power Machine Co., LT. Nissan is a registered trademark of Nissan Marine. Suzuki is a registered trademark of American Suzuki Motor Corporation. Tohatsu is a registered trademark of Tohatsu Corp. Volvo is a registered trademark of AB Volvo Penta. Yamaha® is a registered trademark of Yamaha Motor Corporation.